

September 3, 2020

Community Update – Central Park Playground Phase 2

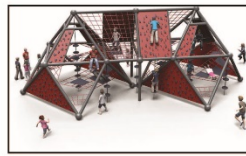
The Board is pleased to announce that the majority of the construction at the Central Park Play area has been completed, and the main playground is now open for community use. We appreciate your patience throughout this process and hope you enjoy the improvements to Central Park.

Please note that the Canadian plant that makes the large climber shut down for most of the summer due to COVID. The plant is back up and running, but the District is looking at a long delay for the climber, and is expecting it will be here ready for install at the end of September or early October. The remaining wood mulch cannot be placed until the climber is installed, therefore, the play area with the two swings and climber will remain closed. We apologize for the inconvenience.

Any questions may be directed to Allison Hanson at ahanson@wbapc.com.



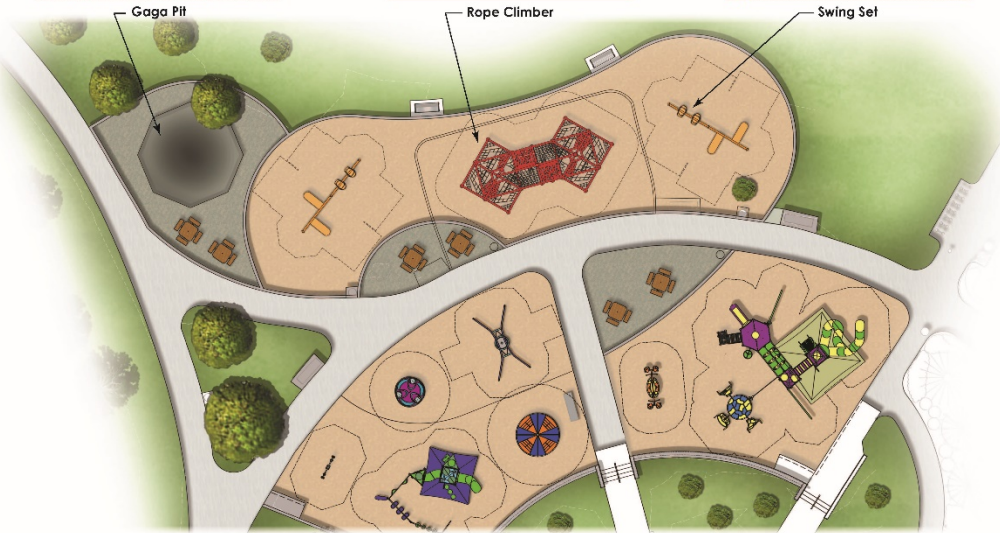
Gaga Pit



Rope Climber



Swing Set



Central Park at The Farm
Phase 2



ARCHITERRA GROUP
3551 SOUTH DEERFIELD ST.
PHOENIX, ARIZONA 85024
OFFICE: 602.546.0300
www.architerra.com